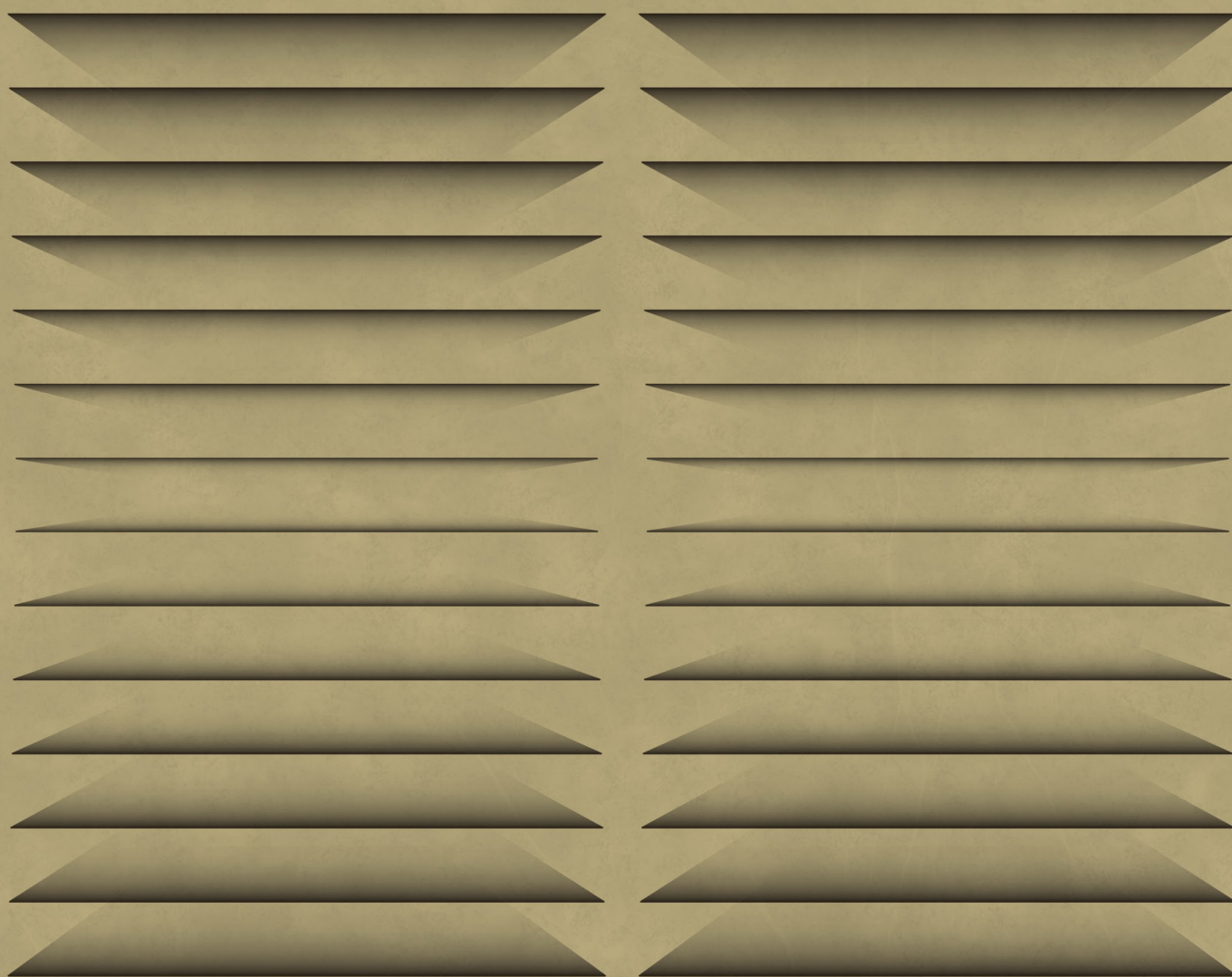


Aetious

Ceramics & Innovation

CAPTURING ESSENCE OF ITALIAN SURFACES



800x
1600
mm

GRANOLITH
SURFACE

Panonia
PLEX PUNCH



1

People

Treat each other fairly and with respect



2

Integrity

Fair dealing is the basis of our business



3

Customer

Listen to our customers and understand their needs



4

Teamwork

Actively support each other and work towards a common purpose



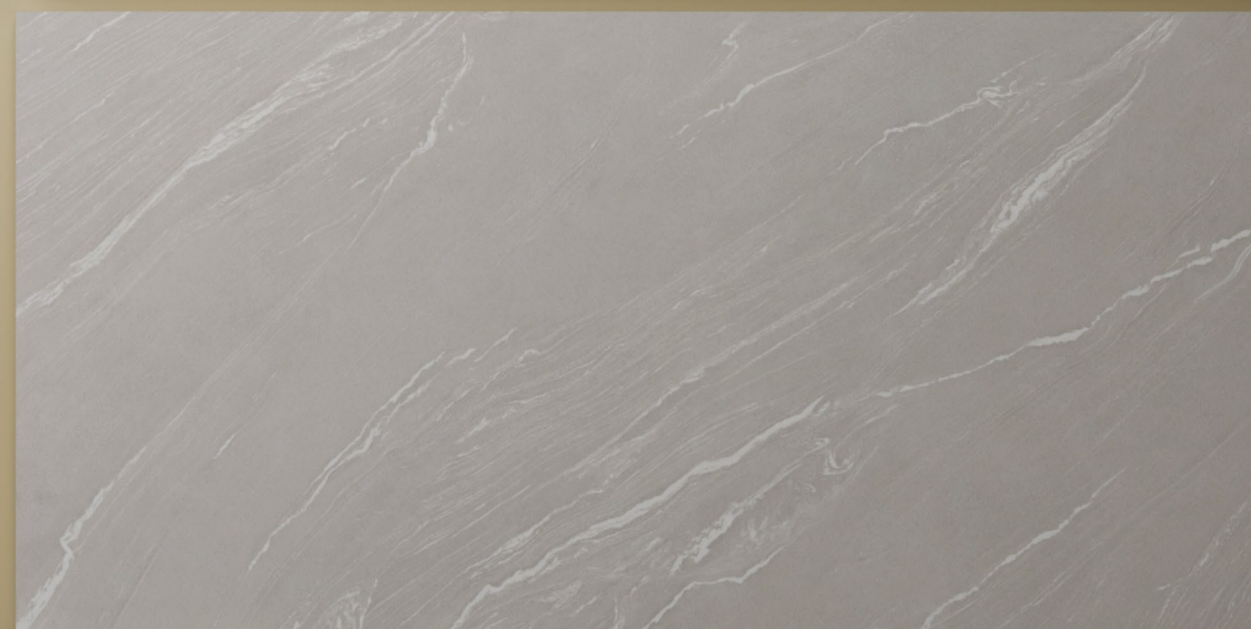
5

Effectiveness

We do the right things right the first time, on time, every time



Panonia
PLEX PUNCH

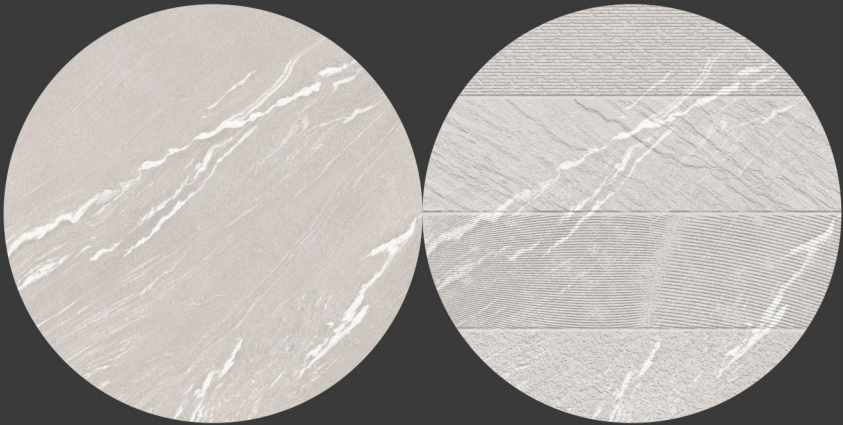


**ASTONISHING
SURFACE..**

Tiles with glorious punch create an unique charm in your home. its 800x1600mm size with artistic patterns uplifts the beauty and attracts everyone.

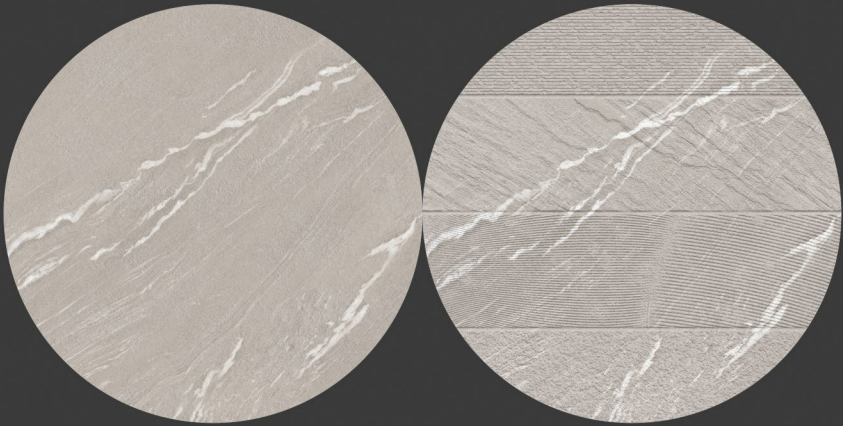
PANONIA
WHITE

PANONIA
WHITE PLEX



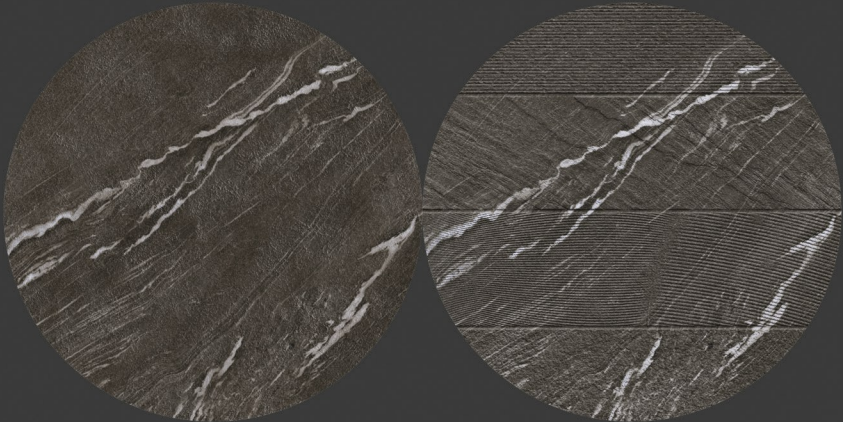
PANONIA
GREY

PANONIA
GREY PLEX



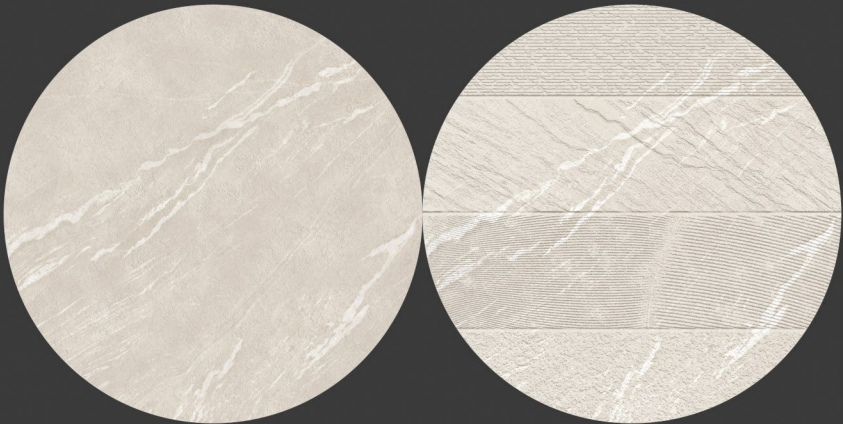
PANONIA
ANTHRACITE

PANONIA
ANTHRACITE PLEX



PANONIA
CREMA

PANONIA
CREMA PLEX



**SPLENDID
BEAUTY**

SUPERIOR PUNCH WITH DETAIL TO
PERFECTION ADDS GLORY TO HOME.



**BREATHTAKING
CHARM**

PHENOMENAL SHADES WITH SUBTLE PUNCH
EFFECTS CRAFTED TO ULTIMATE PRECISION .



GLAZED VITRIFIED TILES

» TILE BODY

The finest quality raw materials make up the resilient and robust tile body of tiles. The raw materials are ethically sourced and sustainably processed.

» GLAZE LAYER

A high-quality glaze coating is added to the engobe layer of the tiles giving the tile properties of texture and shine and making them ready for design and color.

» ABRASION-RESISTANT GLAZE LAYER

The most exceptional aspect of surfaces is their high abrasion-resistant glaze layer which protects the tile's aesthetics, and properties and enhances the functionality of the tiles to a greater extent.

» ENGOBE LAYER

A highly opacious, fusible, and permeable engobe layer makes the second layer of the tiles. The layer makes the tiles highly resistant to water absorption for longevity.

» HIGH PIGMENT DIGITAL PRINTING INK

The surfaces get their unique and versatile properties of the design, color, and more in this stage where digital printing is done on the glaze with high pigment ink for excellent results.



EASY TO CLEAN

The superior glaze of the collection makes the surfaces easy to clean and low maintenance.

STAIN RESISTANT

Do not worry about spills and stains with the high stain-resistant glaze of the premium surfaces.

SCRATCH RESISTANT

Enjoy new-looking surfaces for a very long time with highly scratch and abrasion-resistant surfaces.

TECHNO RICH SURFACES WITH VERSATILE FEATURES

TECHNICAL FEATURES:-



Easy To
Maintain



UV
Resistant



Non-
Slip



Dimensional
Stability



Resistant To
Chemicals



Resistant To
Acids



Water
Proof



Fire
Resistant



Frost
Resistant



Prevents Bacterial
Growth



Heat
Resistant



Eco-
logical

APPLICATION AREAS:-



Residence



Shops



Offices



Hotels



Public Places



Malls



Size. 800x1600mm
Surface. Granolith
Thickness. 09mm

Aetious
Ceramics & Innovation



Panonia White Plex & Panonia White
4 Random





Size. 800x1600mm
Surface. Granolith
Thickness. 09mm

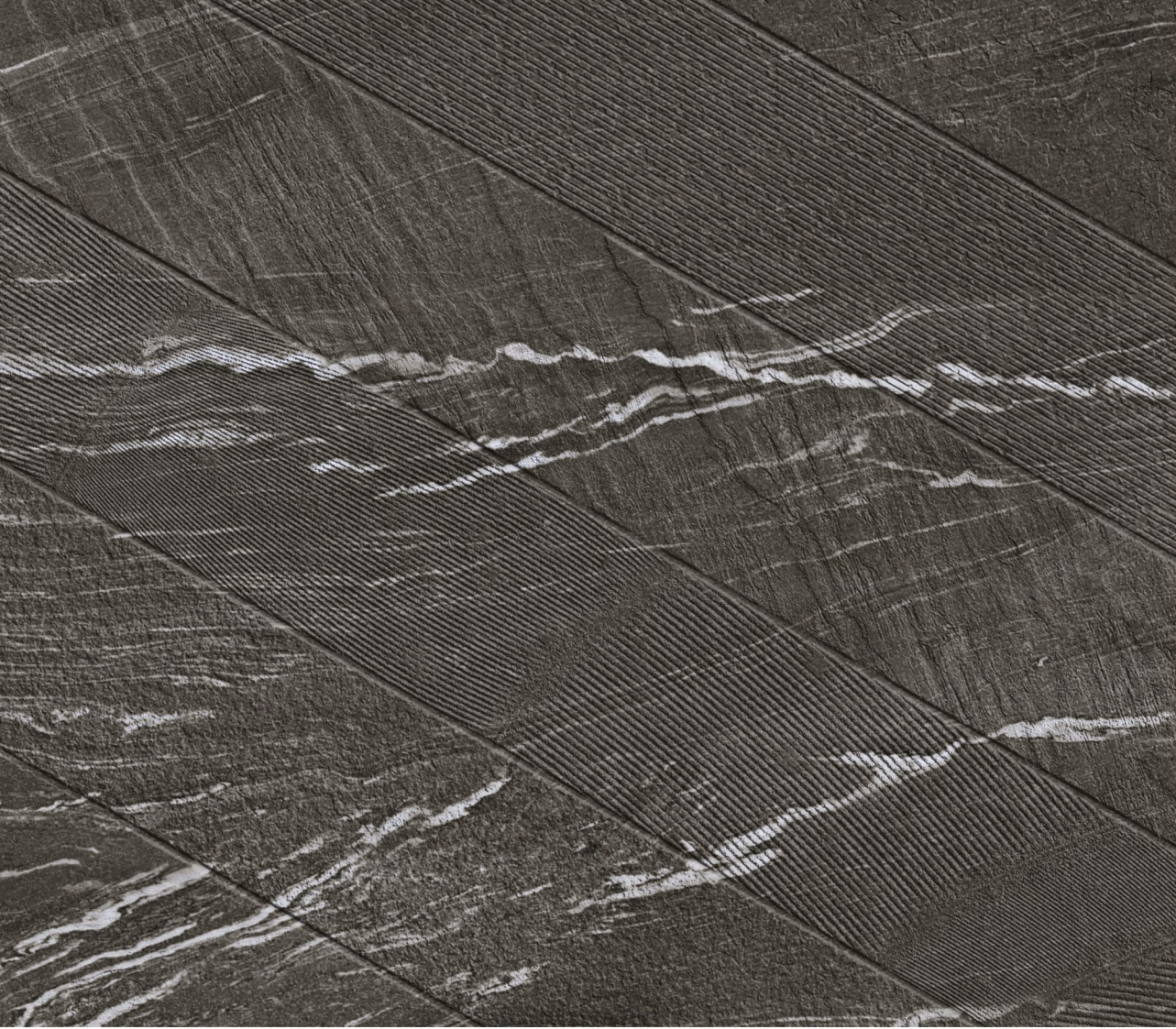
Aetious
Ceramics & Innovation



Panonia Grey Plex & Panonia Grey
4 Random





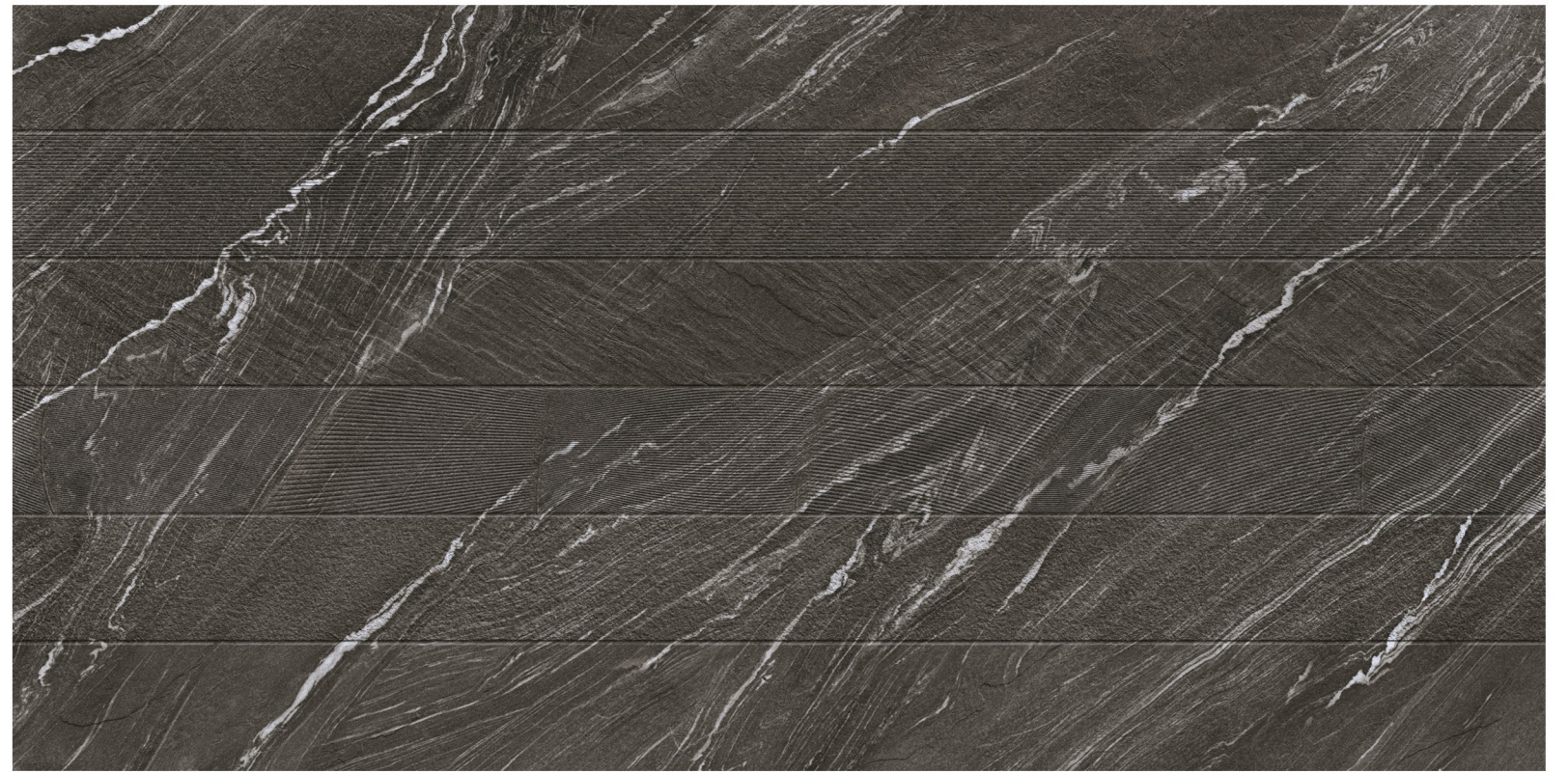


Size. 800x1600mm

Surface. Granolith

Thickness. 09mm

Aetious
Ceramics & Innovation



Panonia Anthracite Plex & Panonia Anthracite
4 Random





Size. 800x1600mm

Surface. Granolith

Thickness. 09mm

Aetious
Ceramics & Innovation



Panonia Crema Plex & Panonia Crema
4 Random





Technical Specification

CHARACTERISTIC	STANDARD AS PER ISO-13006/EN14411 GROUP BIA	MEAN VALUE OF GVT	TEST METHOD
REGULATORY PROPERTIES			
Deviation in length & width	±0.5 %	±0.2 %	ISO-10545-2
Deviation in thickness	±5.0 %	±4.0 %	ISO-10545-2
Straightness in side	±0.5 %	±0.15 %	ISO-10545-2
Rectangularity	±0.6 %	±0.2 %	ISO-10545-2
Surface flatness	±0.5 %	±0.2 %	ISO-10545-2
Color difference	Unaltered	Slight variation is possible due to different batches as per signed samples	ISO-10545-16
Glossiness	As per mfg	Sharp	GLOSSOMETER
SURFACE MECHANICAL PROPERTIES			
Water absorption	< 0.50 %	< 0.5 %	ISO-10545-3
Apparent density	> 2.0 g/cc	> 2.28 gm/mm ²	DIN 51082
MASSIVE MECHANICAL PROPERTIES			
Modulus of rupture	Min. 35 N/mm ²	Min. 35 N/mm ²	ISO-10545-4
Breaking strength	Min. 1300 N	Min. 1700 N	ISO-10545-4
Impact resistance	As per mfg.	Min. 0.55	ISO-10545-5
SURFACE MECHANICAL PROPERTIES			
Surface abrasion resistance	As per mfg	Min. Class-4	ISO-10545-7
MOH's hardness	As per mfg	Min. 5	EN 101
THERMO HYGROMETRIC PROPERTIES			
Frost resistance	No damage	No damage	ISO-10545-12
Thermal shock resistance	No damage	No damage	ISO-10545-9
Moisture expansion	Nil	0.1 (mm/3)	ISO-10545-10
Thermal expansion (COE)	Max. 9.0 x 10-6	Max. 6.5 x 10-6	ISO-10545-8
Crazing resistance	As per mfg	Min. 7 Cycle	ISO-10545-11
CHEMICAL PROPERTIES			
Chemical resistance	No damage	No damage	ISO-10545-13
Stain resistance	Resistant	Resistant	ISO-10545-14

Size	Thickness (approx.)	Pieces / Box	Area / Box	Wt./Box (approx.)
800x1600mm	9 mm	2 pcs.	2.56 sq. mtr.	52 kgs.

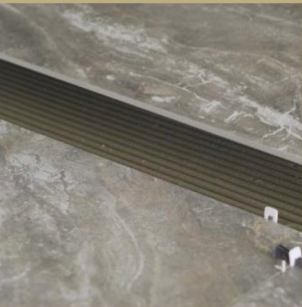
Laying & Levelling



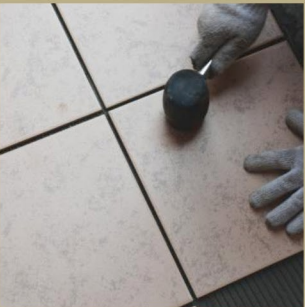
Base Structure



Cement Laying On Tile



Joints



Fixing The Tile



Spacers + Laveller



Lavelling Wedges



After Lavelling Process
Leave Int For 8-10 Hrs.



Remove Wedges
Ones It Dry



Joint Grouting



Final Cleaning

Floor and Wall Installation

1. First spread the cement mixer onto the floor and wall substrate.
2. At the same time, apply the cement mixer onto the back of the slab with a tile trowel.
3. The recommended cement mixer must be spread over in one direction only.
4. Using a trowel and follow the same direction as previously applied to the back of the slab.
5. Being careful to maintain a minimum joint of 3mm.
6. Tab the slab with a rubber trowel for a complete fixing, ensuring the air is expelled.
7. Complete the laying operations using a suitable sealant, while keeping at least a 3mm joint through the use of spacers.
8. To make this task easier, use the special device for pulling over the slabs, available in the market.
9. Levelling wedges at each linear metre of the slabs are recommended.
10. After levelling process leave it for 8-10 hours, remove wedges once it gets dry.